

VIRTUAL REEF DIVER- Help guide – Part 2

Contents

PART 1: Description of the interface and how it works	1
PART 2: Classifying coral reef images.....	1
PART 3: Common misclassifications.....	1
PART 4: Example images (full classification).....	3

PART 1: Description of the interface and how it works

When classifying an image, first select the classification “Type” on the right-hand side of the page, then click on a circle within the image label it as that type. You can change the classification of an already classified point by reselecting it with a different “Type” option chosen. The color of the circle, once you classify it shows which type it has been labelled. White semi-transparent circles remain unclassified.

Repeat this process until you have classified all 15 points on the image. Once you have classified all 15 points the submit button will turn blue. Click it to submit that image and move on to the next one.

PART 2: Classifying coral reef images

Below you can find examples of classified images. Carefully examine the images noting which points have been classified as which types. Each example image, and the images you will complete on the Virtual Reef Diver website, contains 15 classification points. There are 6 options to choose from when identifying an area within the image: *Hard Coral*, *Soft Coral*, *Algae*, *Sand*, *Water*, *Other* and *Unsure*.

As a general rule of thumb, if the classification point is:

- clear enough to see well but does not match any of the categories, choose “other” :
- not clear to identify, choose “unsure” :



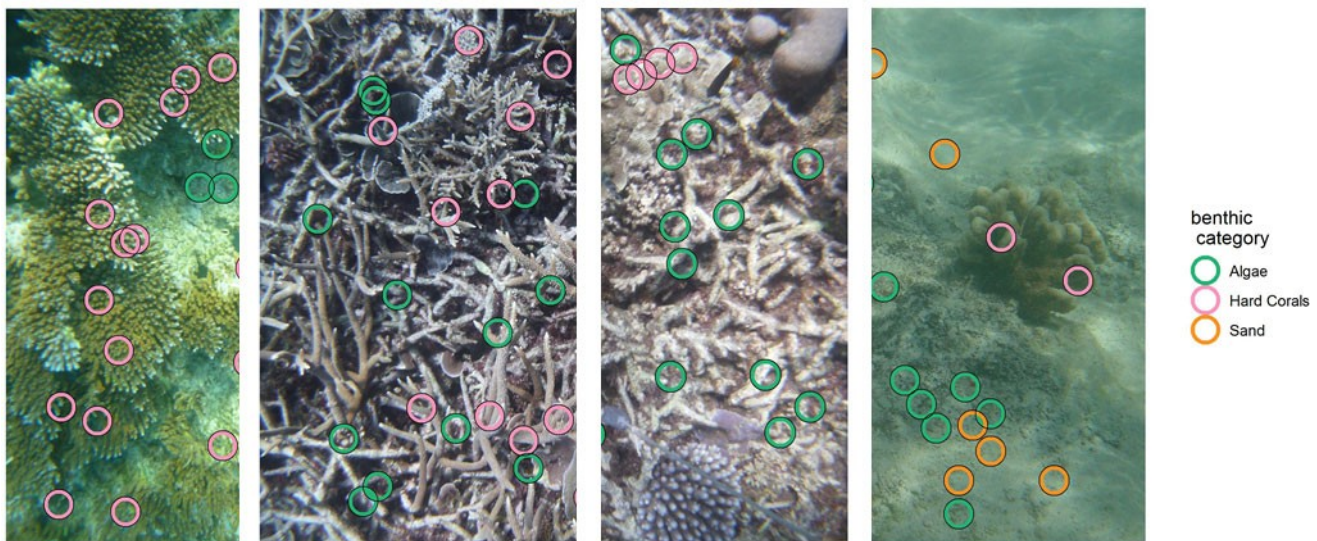
PART 3: Common misclassifications

Two common mistakes are:

- (1) (Algae) misclassified as (Hard Coral)
- (2) (Soft Coral) misclassified as (Hard Coral)

3.1 Algae confused with Hard Coral

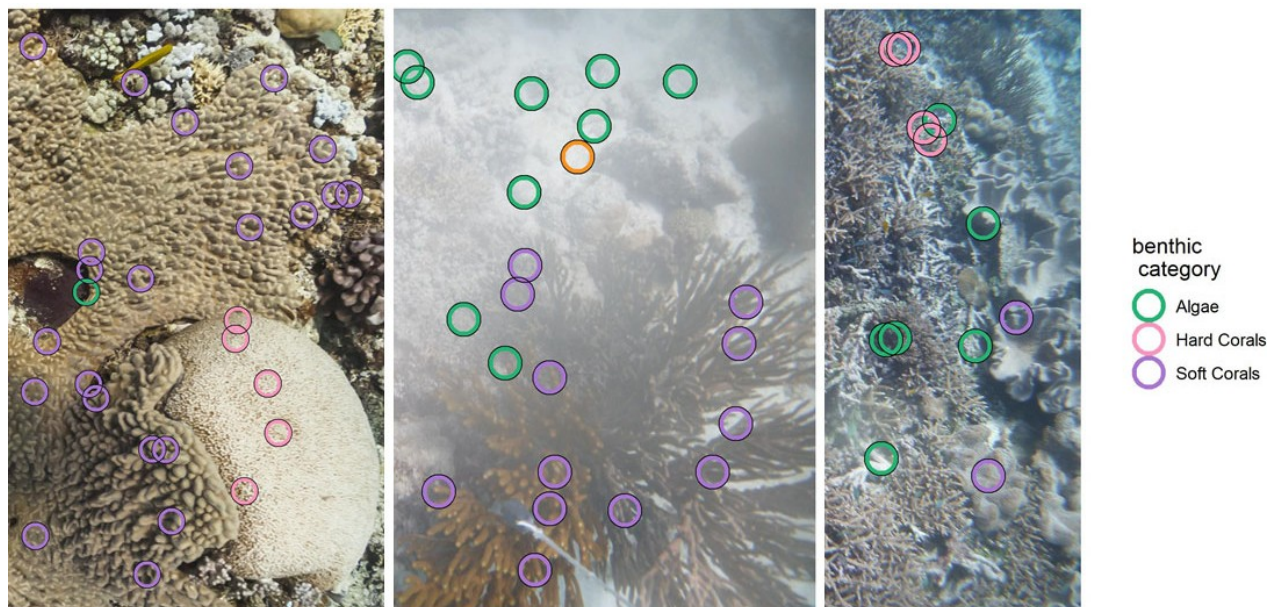
The following examples are cropped from classification images. Here, the (green) points are classified as “Algae” because the hard coral is dead and it is colonized with turf algae.



Turf algae is not the only algae that you will see. The basic help guide gives more examples of algae.

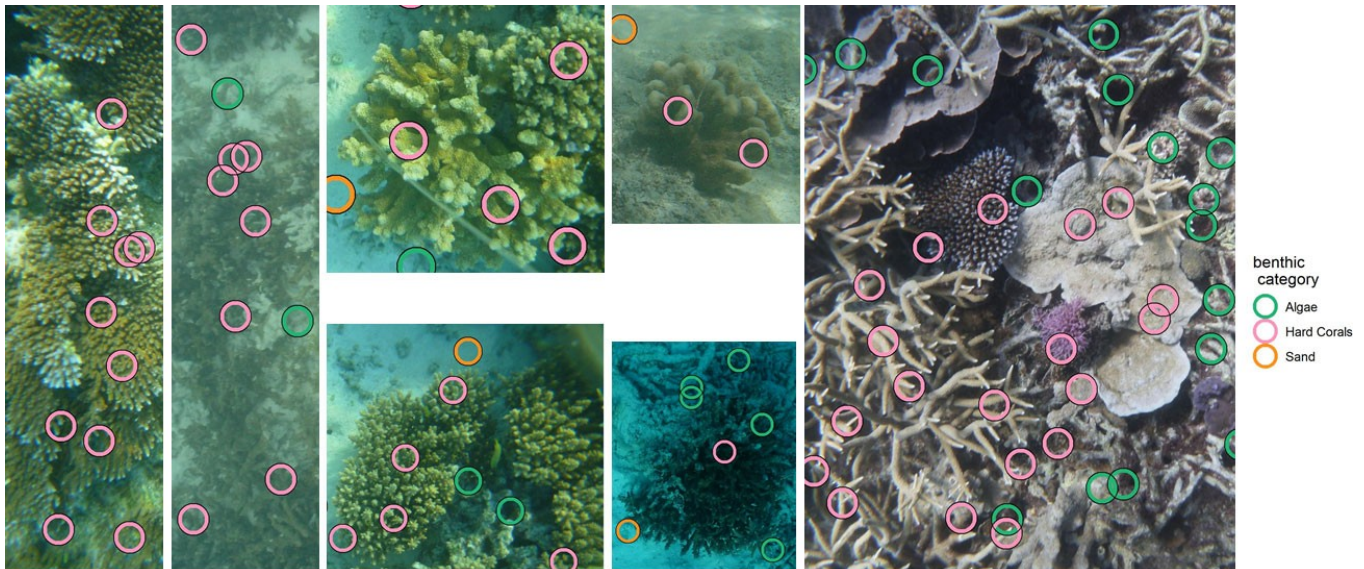
3.2 Soft coral confused with Hard coral

The following examples are cropped from classification images. Here we focus is on the points that are classified as “Soft Corals” (purple). These three different forms of soft coral are the most common in the classification images. See the basic help guide for more information on soft corals.



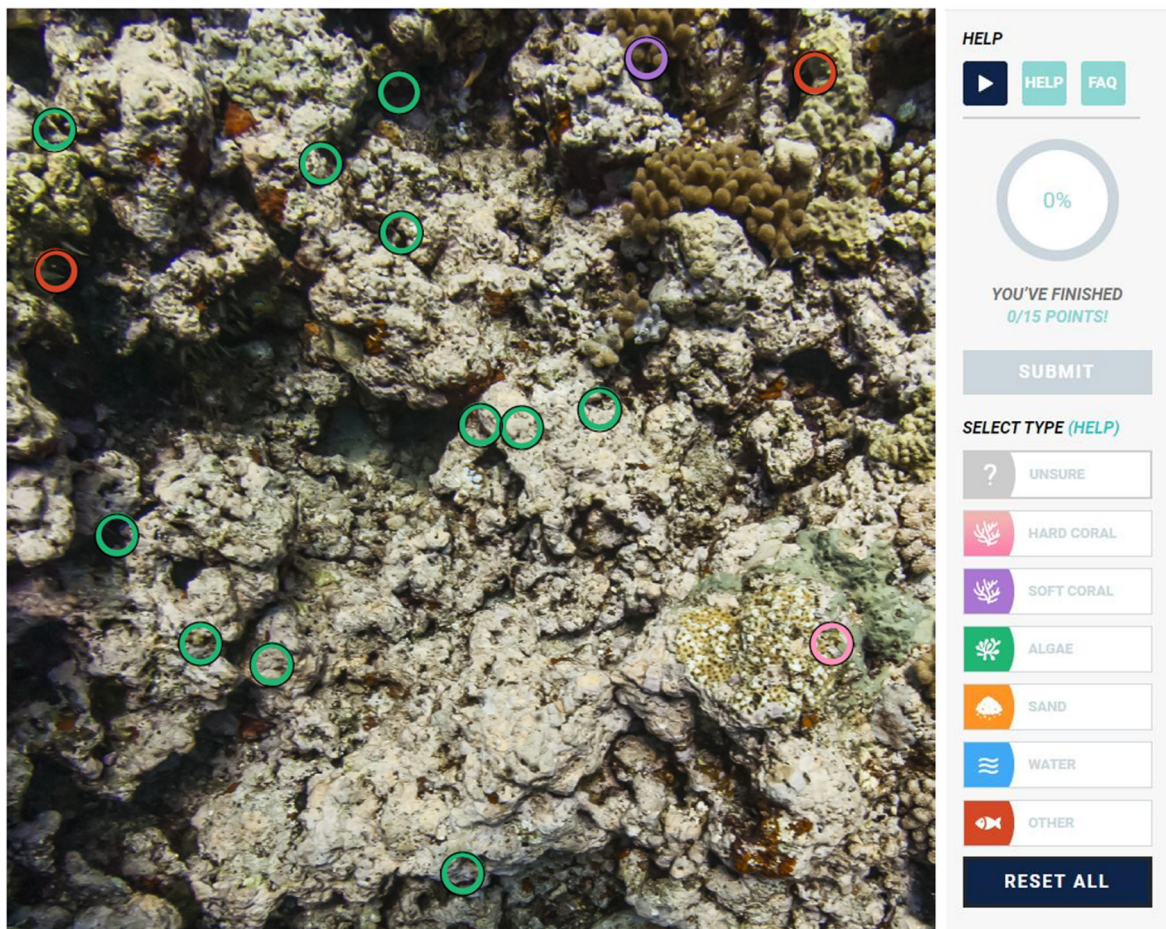
3.3 Hard coral diversity in shapes

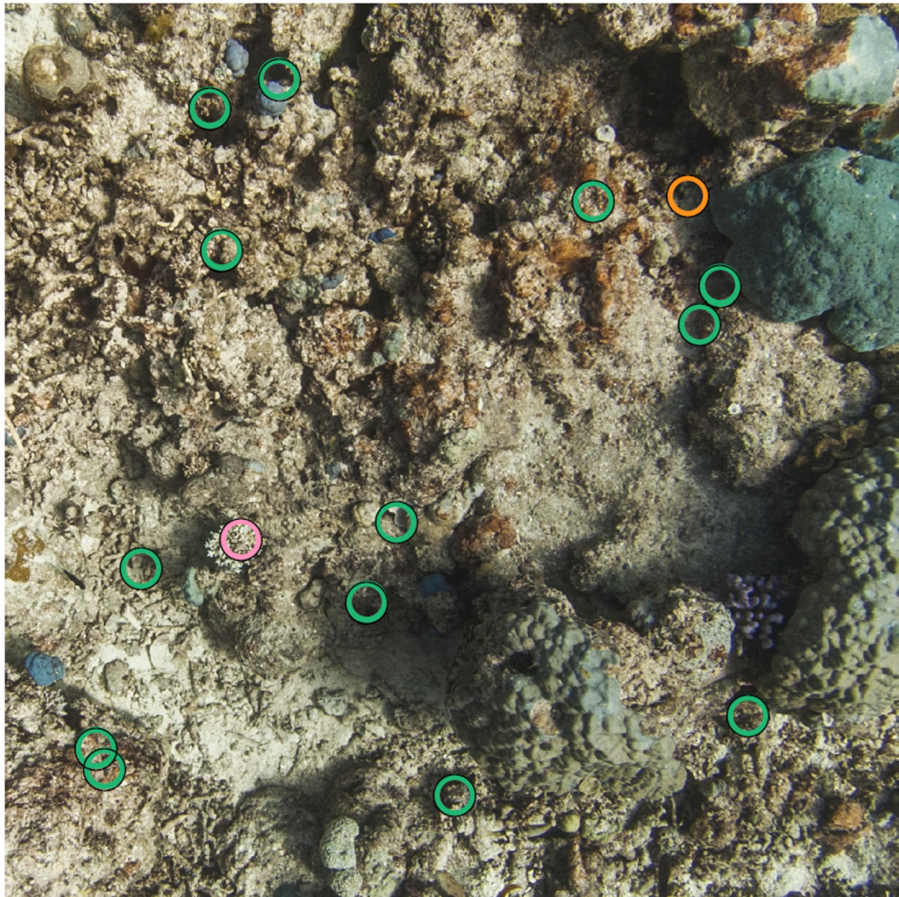
Hard corals can take different shapes and colors depending on their types. The pink classification points show the most common types of hard corals – different types of hard corals can be found within a same classification image. The basic help guide has a full section about the different shapes of hard corals. Their look may slightly change depending of the light and quality of images.



PART 4: Example images (full classification)

Here are 5 examples of classified images:





HELP

▶ HELP FAQ

0%

YOU'VE FINISHED
0/15 POINTS!

SUBMIT

SELECT TYPE (HELP)

? UNSURE

HARD CORAL

SOFT CORAL

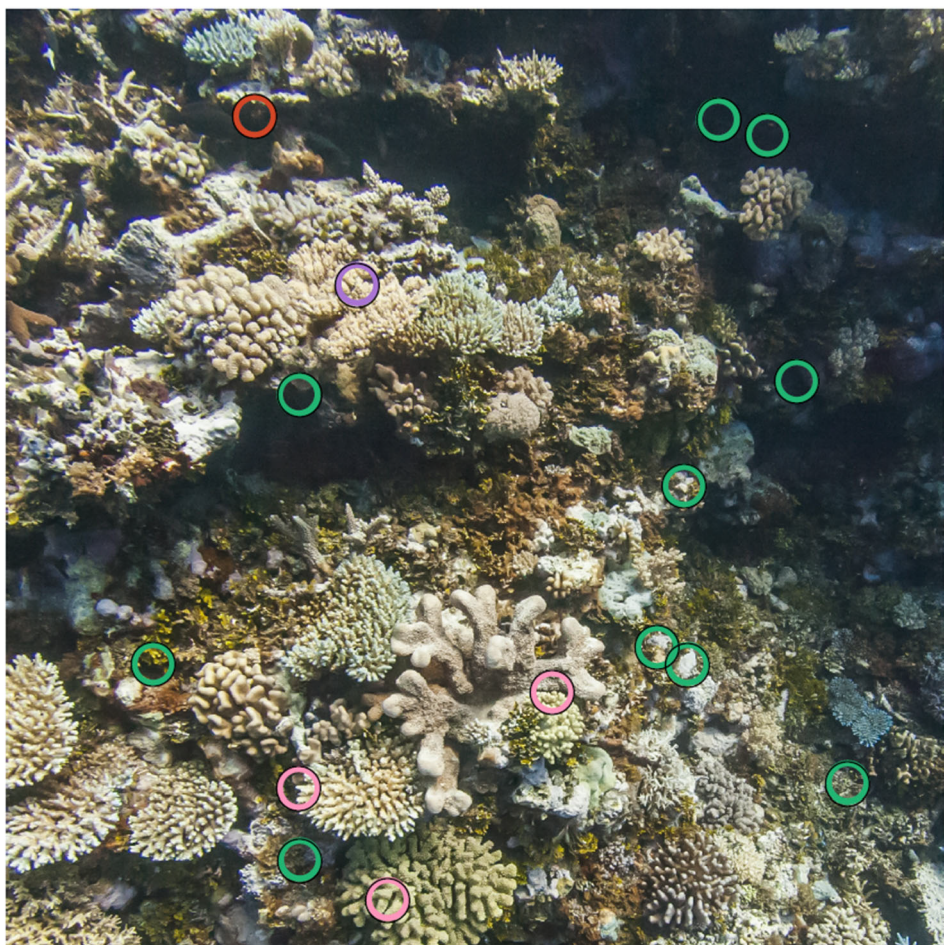
ALGAE

SAND

WATER

OTHER

RESET ALL



HELP

▶ HELP FAQ

0%

YOU'VE FINISHED
0/15 POINTS!

SUBMIT

SELECT TYPE (HELP)

? UNSURE

HARD CORAL

SOFT CORAL

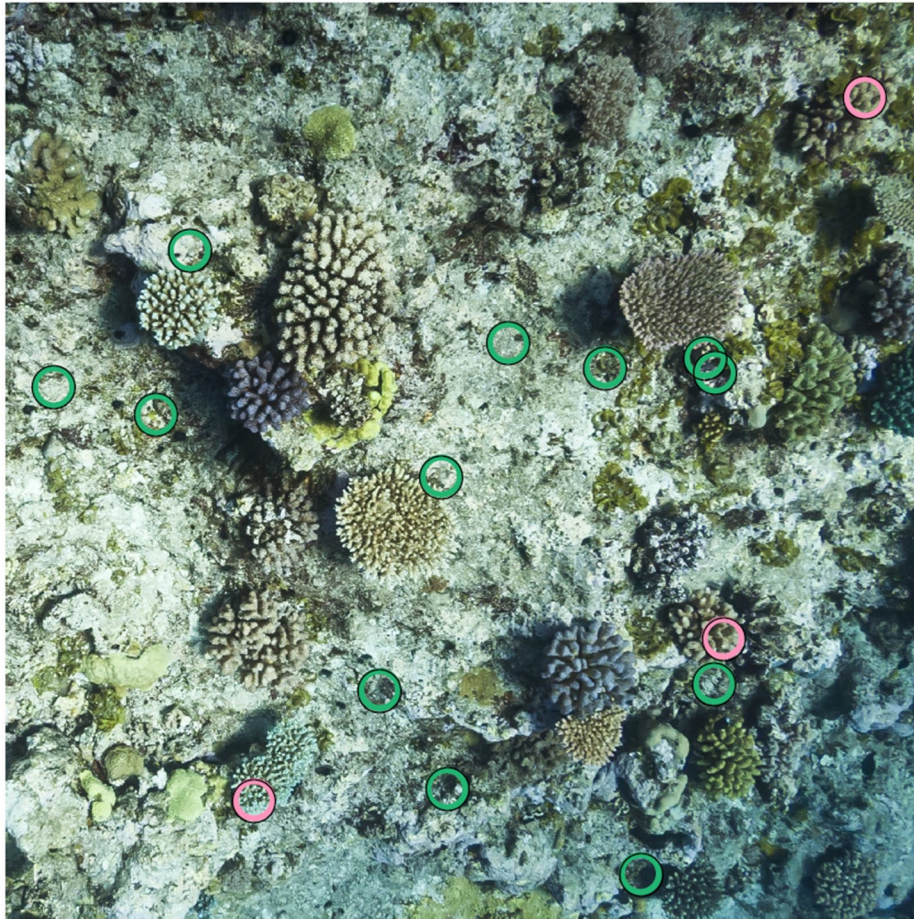
ALGAE

SAND

WATER

OTHER

RESET ALL



HELP

▶ **HELP** **FAQ**

0%

YOU'VE FINISHED
0/15 POINTS!

SUBMIT

SELECT TYPE (HELP)

? UNSURE

HARD CORAL

SOFT CORAL

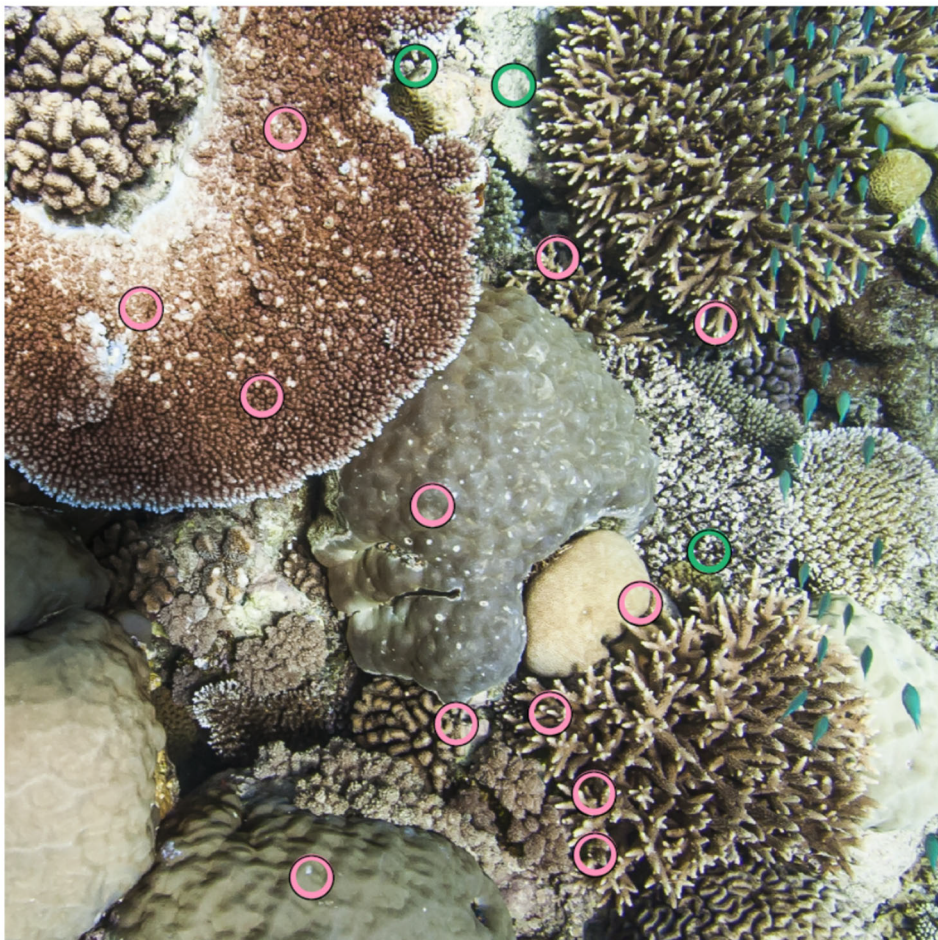
ALGAE

SAND

WATER

OTHER

RESET ALL



HELP

▶ **HELP** **FAQ**

0%

YOU'VE FINISHED
0/15 POINTS!

SUBMIT

SELECT TYPE (HELP)

? UNSURE

HARD CORAL

SOFT CORAL

ALGAE

SAND

WATER

OTHER

RESET ALL