



VIRTUALREEF DIVER



The Great Barrier Reef is treasured globally and it is up to us Australians to do our best to keep it healthy for future generations. But did you know only 15% of the Great Barrier Reef is regularly monitored? How can we manage something so *big*? Virtual Reef Diver is a citizen science project using advanced modelling to predict coral health across the whole Great Barrier Reef. "Citizen science" means we rely on help from the public to be able to gather more data than we ever could with a small research team. We're inviting people who love the reef to share their photos and knowledge. With your help, we can improve this unique tool and give new insights to anyone who protects or manages this natural wonder.

Do you dive or snorkel on the Great Barrier Reef?



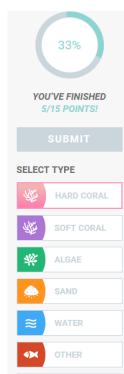
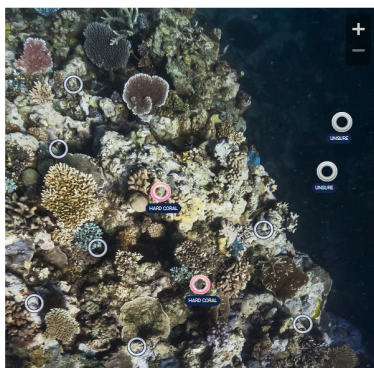
CONTRIBUTE IMAGES

In order for our model to work we need as many images as possible from all over the Great Barrier Reef. Taking and uploading an image is simple. Just position your camera about 1 metre away from the reef, point it directly at the reef wall or floor, and make sure the photo is well lit and focused. Detailed instructions are available on our website. No matter what you see - hard coral, soft coral, algae, sand - it's all important to us.

Get started today!



Want to help from your computer at home?



CLASSIFY IMAGES

We need volunteers to help classify what each photo is showing. If you're an expert that's great, but if you're new you can help too. We have created a simple help video and a PDF describing each of the Virtual Reef Diver categories so anyone should be able to contribute. Even classifying one photo is helpful, and it takes less than two minutes. Create your login and get started today at www.virtualreef.org.au

 @Vr2lReefDiver