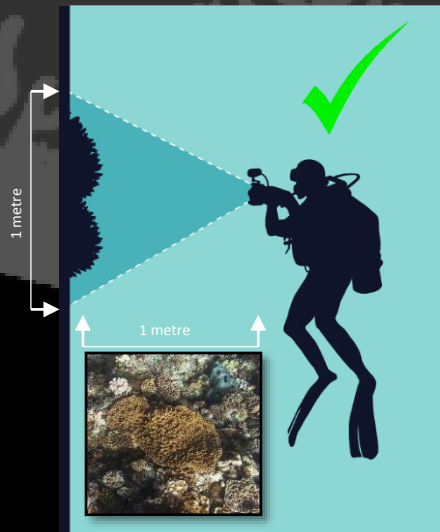
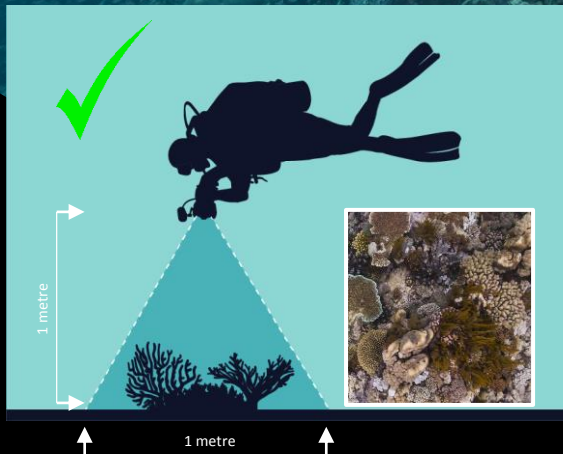


VIRTUALREEFDIVER

Taking images & uploading them to VRD

Taking underwater images that can be used for the Virtual Reef Diver Project

- Point the camera directly at the reef from approximately 1 metre (3 feet) above the seabed or reef (left panel). If shooting along a reef wall, take photos approximately 1m from the wall (middle panel).
- This allows you to encompass an area of approximately 1m x 1m.
- Pictures taken at a side angle are less useful (right panel).

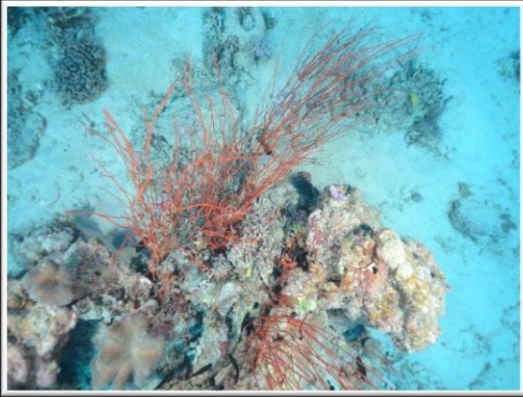




Taking underwater images that can be used for the Virtual Reef Diver Project

- We recommend using a flash when possible. If a separate strobe is not being used the camera's built-in flash can also be used.
- Use a wide angle lens or zoom at widest angle when available. We recommend that you also set your camera on the highest digital resolution and largest record image size possible.
- Save your images in .jpeg rather than raw format.

Taking underwater images that can be used for the Virtual Reef Diver Project



GOOD – In focus and adequately lit.



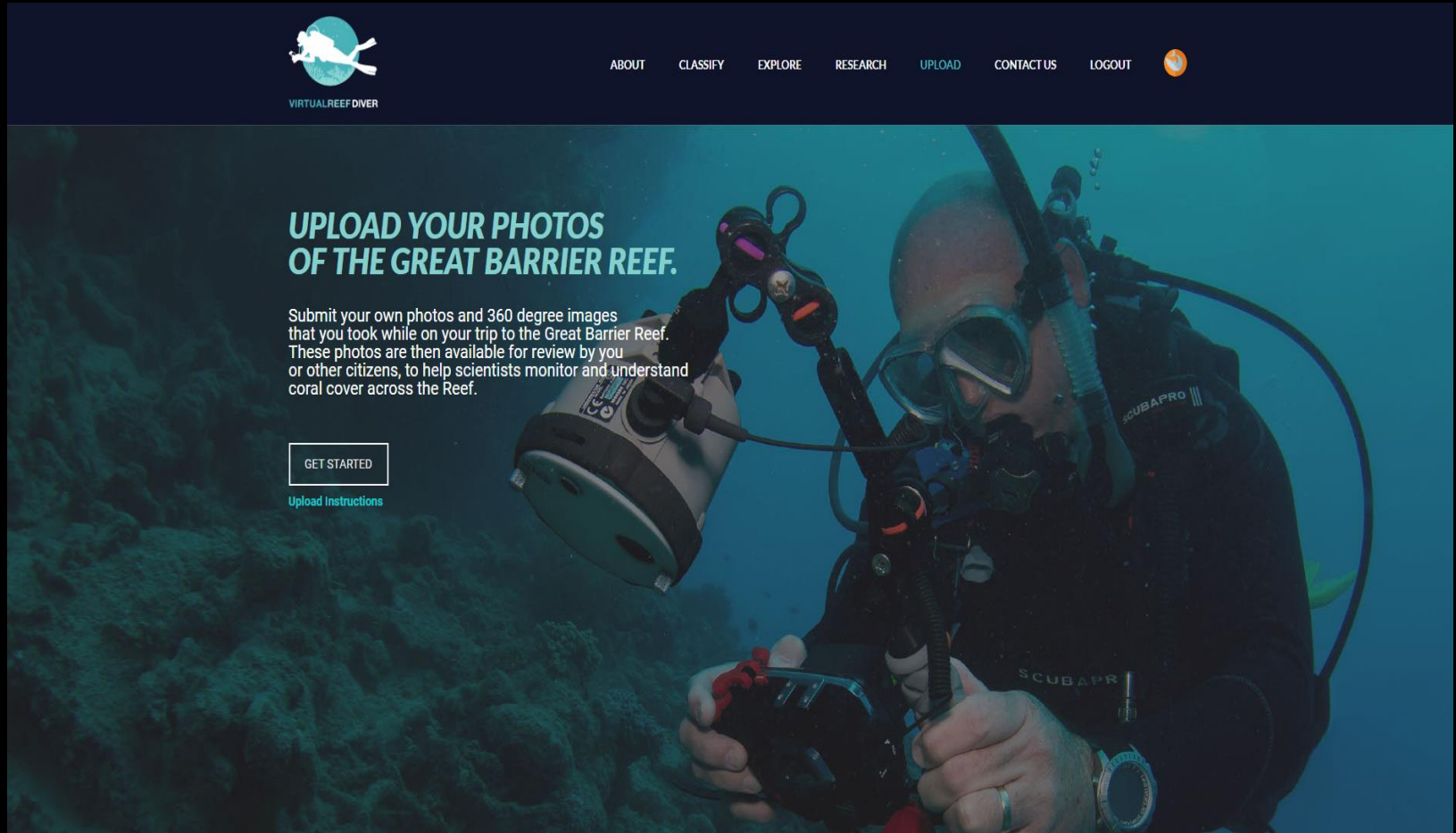
NOT AS GOOD – Not adequately lit, large dark areas, which can make classification difficult. Adjust camera settings if possible.



BAD – The aim is to take images of the Reef rather than people. Keep these image for yourself and friends!

It is ok if the image is not composed entirely of hard corals in pristine condition. Remember, we want to know where there is, and isn't coral and so any image of the seabed is extremely useful.

Then upload your images at:
www.virtualreef.org.au/upload/



The screenshot shows the Virtual Reef Diver website. At the top is a dark blue header with a logo on the left and a navigation menu on the right. The logo features a white silhouette of a diver against a blue circle, with the text 'VIRTUALREEF DIVER' below it. The navigation menu includes links for 'ABOUT', 'CLASSIFY', 'EXPLORE', 'RESEARCH', 'UPLOAD', 'CONTACT US', and 'LOGOUT', followed by a small orange circular icon. The main content area has a background image of a diver underwater. On the left, the text 'UPLOAD YOUR PHOTOS OF THE GREAT BARRIER REEF.' is displayed in a bold, teal font. Below this, a paragraph explains that users can submit photos and 360-degree images from their Great Barrier Reef trips for review by scientists and other citizens to monitor coral cover. A 'GET STARTED' button is located below the text, with a link to 'Upload Instructions' underneath it.

**UPLOAD YOUR PHOTOS
OF THE GREAT BARRIER REEF.**

Submit your own photos and 360 degree images that you took while on your trip to the Great Barrier Reef. These photos are then available for review by you or other citizens, to help scientists monitor and understand coral cover across the Reef.

GET STARTED

[Upload Instructions](#)

Thanks for contributing to Virtual Reef Diver!



Partner Organisations

